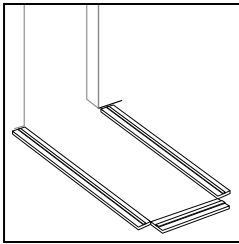
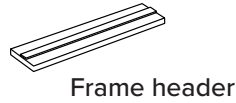
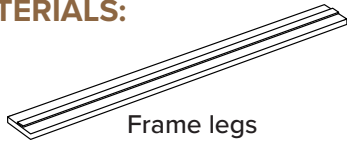


Fire Rated Wood Door Frames

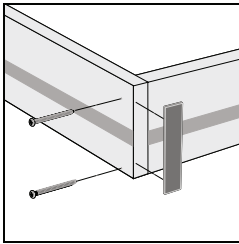
Installation instructions using the traditional shim system

MATERIALS:



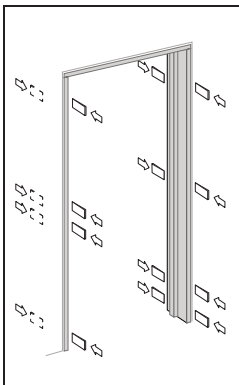
STEP 1

Measure the rough opening size and cut the frame legs and header to desired length to conform to the dimensions of the door that will be installed.



STEP 2

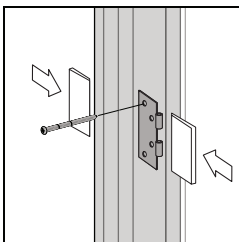
Using #8 x 2 inch wood screws, secure the header to the frame legs so that the ends of the header are flush with the outside edges of the frame legs. Pre-drill holes and use two screws on each end of the header. Attach the supplied sticky back intumescent strip to the end of the header as shown in the diagram.



STEP 3

Stand the frame unit into the opening, making sure the hinge side corresponds to the door placement. There should be adequate clearance between the back of the frame legs and the wall studs, but not more than 1/2". Plumb the hinge frame leg by placing or wedging shims behind each hinge area. Use the #8 x 3 inch installation screws to secure the hinge leg to the wall. Screws must penetrate the frame, shims and into the wall stud.

NOTE: To hide screws from view, countersink holes in the stop area and apply the supplied stop later. Installation screws can also be placed behind the weather stripping or smoke seals to be hidden from view.



STEP 4

Making sure the frame header is perpendicular to the hinge leg, place shims behind the latch frame leg directly across from the hinge shims. Also place shims behind the strike plate and/or dead bolt. Secure the latch leg with #8 x 3 inch installation screws, as was done with the hinge leg.

STEP 5

Install hinges per manufacturer's installation instructions.